

KR80 0.25t, 0.5t, 1t, 2t, 3.5t, 5t, 10t



Description

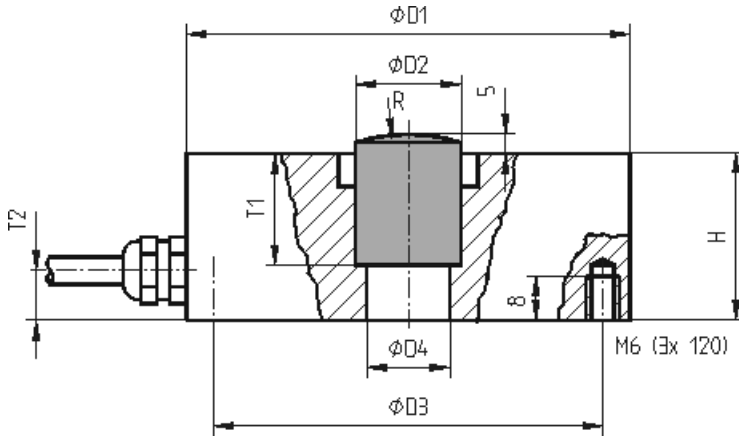
The load cell KR80 is a precision load cell in cylindrical design. It is hermetically sealed by means of welding and available in a calibratable design according to the European requirements OIML R-60 up to class C6. It stands out thanks to its particularly low measurement path of just 0.1mm.

The environmental protection is IP 66.

Force transmission is realised by a cylindrical load knob that has to be inserted into the hole ØD2.

Optionally pendular bases for applications in weighing technology can be installed.

Dimensions



Technical Data

Force sensor

Type	Force sensor
Force direction	Tension / Compression
Force introduction	Inner thread
Operating force	150 %FS
Material	Stainless steel
Breaking force	300 %Fn

Electrical Data

Input resistance	1110 Ohm
Tolerance input resistance	50 Ohm
Output resistance	1025 Ohm
Tolerance output resistance	25 Ohm
Insulation resistance	>5x10 ⁹ Ohm
Zero signal	2 mV/V

Connection Data

Connection type	4 conductor open
Cable length	3 m

Temperature

Rated temperature range f	-10 ... 40 °C
Operating temperature range f	-30 ... 70 °C
Storage temperature range f	-50 ... 80 °C
Environmental protection	IP66









Pin Configuration

Symbol	Description	Wire colour
+Us	positive bridge supply	pink
-Us	negative bridge supply	grey
+Ud	positive bridge output	brown
-Ud	negative bridge output	white

*Pressure load: positive output signal.
Shield- transparent.*

accessories

	Description	Description
	Calibration Certificate kn/20/5	Factory calibration certificate for force to 20 kN in accordance with DIN EN ISO / IEC 17025 and ISO 9000 for test materials monitoring according to DIN ISO 9001: 2008 with 5 load levels and 3 series of measurements. Compressive Force
	Calibration Certificate kn/200/5	Factory calibration certificate for force to 200 kN in accordance with DIN EN ISO / IEC 17025 for test materials monitoring according to DIN ISO 9001: 2008 with 5 load levels and 3 series of measurements. Compressive Force
	GSV-1H	Measuring amplifier in top-hat rail housing for sensors with strain gauges. Analogue output -10V...+10V, limiting frequency 250Hz, 4 input sensitivities from 2.0mV/V.
	GSV-2TSD-DI	Measuring amplifier in desktop-housing for sensors with strain gauges. Serial port RS232, USB port, analogue output -5V...+5V, limiting frequency 260Hz, input sensitivity 3.5mV/V.
	GSV-3USB	Measuring amplifier in aluminum housing (IP54) for sensors with strain gauges. Limiting frequency 1250Hz, input sensitivity 2 / 3,5 / 10 mV/V.
	GSV-6K	Analogue measuring amplifier in plug housing for sensors with strain gauges. Analogue output configurable, TEDS, sampling frequency 10Hz ... 25kHz, input sensitivity configurable 0.1mV/V ... 8mV/V