

## TA125 ±600Nm

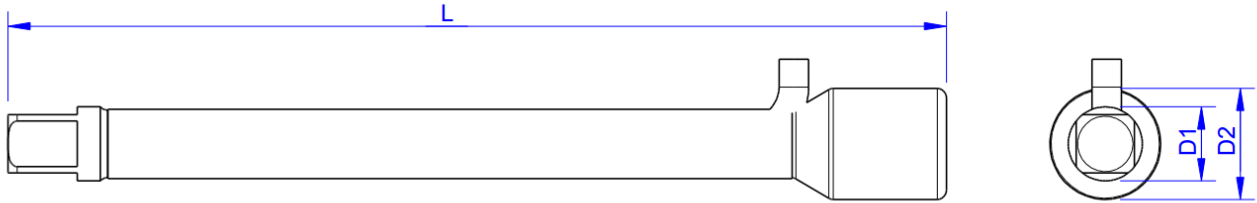


### Description

The torque sensor TA125 is suitable for measuring the reaction torque up to a nominal torque of 600Nm (corded, non-rotating).

The torque sensor TA125 is used to monitor torques in quality assurance.

## Dimensions



## Technical Data

### Electrical Data

Input resistance	350 Ohm
Tolerance input resistance	5 ±
Output resistance	350 Ohm
Tolerance output resistance	5 ±
Insulation resistance	5x10 <sup>9</sup> Ohm
Rated range of excitation voltage f	2.5 ... 5 V
Operating range of excitation voltage f	1 ... 10 V
Zero signal	0.05 mV/V
Rated output	2.5 mV/V / FS

### Precision

Accuracy class	1%
Relative linearity error	0.1 %FS
Relative zero signal hysteresis	0.1 %FS
Temperature effect on zero signal	0.01 %FS/K
Temperature effect on characteristic value	0.01 %RD/K
Relative creep	0.05 %FS

### Connection Data

Connection type	4 conductor open
-----------------	------------------

### Temperature

Rated temperature range f	-10 ... 60 °C
Operating temperature range f	-10 ... 85 °C
Storage temperature range f	-10 ... 85 °C
Environmental protection	IP65

### Basis Data

Type	full cylinder
Rated torque	600 Nm
Maximum operating torque	150 %FS
Breaking torque	400 %FS
Rated torsion angle	0.7 °/FS
Torque introduction	Außenvierkant
Dimension 1	1"
drehmomentausleitung	Innenvierkant
Dimension 2	1"
Diameter	43 mm
length	200 mm
Material	Tool steel

Abbreviation : RD: „Reading“; FS: „Full Scale“;

1) The exact nominal sensitivity is indicated in the test report.




## Pin Configuration

Symbol	Description	Wire colour
+Us	positive bridge supply	brown
-Us	negative bridge supply	white
+Ud	positive bridge output	green
-Ud	negative bridge output	yellow

*Compressive load: positive output signal.  
Shield- transparent.*

## accessories

Description	Description
	DAkKS calibration of torque sensors, 5 points, up to 600 Nm