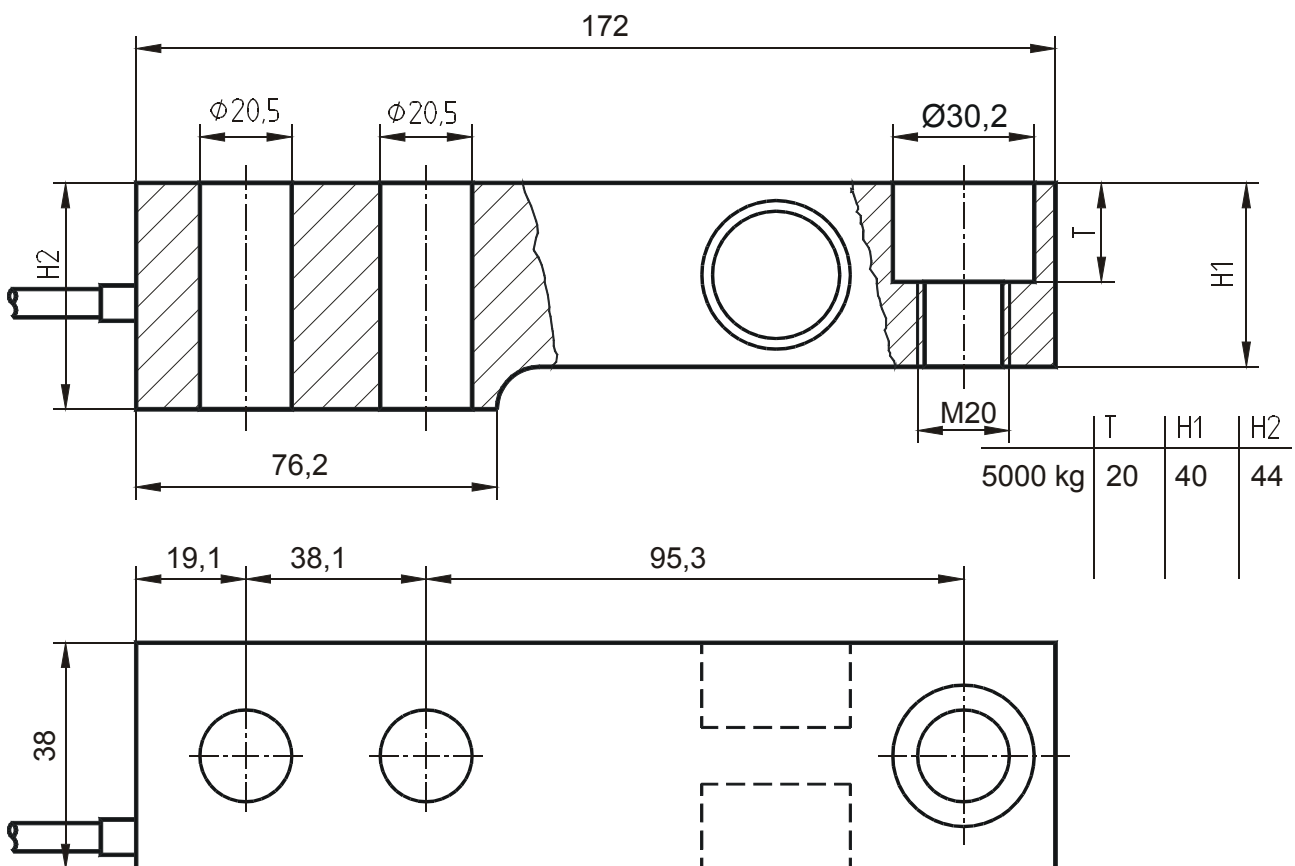


Load cell LCS172

Nominal load range (compression) 5000kg

The load cell LCS 172 is distinguished by a low total height. The halfway penetrating thread in the load hole facilitates the location of a height-adjustable base or a load button.

Dimensions





Load cell LCS172

Nominal load range (compression) 5000kg

Technical Data

Load cell	Compression				
Construction	Shearing beam				
Material	Stainless steel 1.4542				
Accuracy classes	CC (0.05), C1 (0.03%), C3 (0.02%)				
Nominal loads (F _N)	5000kg				
Accuracy class accord. to OIML R60	CC	C3	C4	C5	
Maximum scale division value		3000	4000	5000	
Minimum scale division value		F _N / 6000	F _N / 8000	F _N / 10000	
Combined error	< ±0.050	< ±0.023	< ±0.018	< ±0.014	% S _N
Zero point return error (30 min)	< ±0.050	< ±0.017	< ±0.013	< ±0.010	% S _N
Creep error (30 min)	< ±0.060	< ±0.025	< ±0.018	< ±0.015	% S _N
Temperature coeff. of the zero signal	< ±0.025	< ±0.012	< ±0.009	< ±0.07	% F _N / 5°C
Temp. coeff. of the nominal output	< ±0.025	< ±0.0088	< ±0.007	< ±0.006	% S _N / 5°C
Operating load	150				% F _N
Breaking load	300				% F _N
Maximum lateral load	100				% F _N
Nominal temperature range	-10...+40				°C
Operating temperature range	-40...+80				°C
Storage temperature range	-40...+90				°C
Nominal output (S _N)	2.00 ± 0.02				mV/V
Zero signal tolerance	±2				% F _N
Max. supply voltage	15				V
Input resistance	1000 ± 50				Ohm
Output resistance	1000 ± 10				Ohm
Insulation resistance	> 5 · 10 ⁹				Ohm
Connection, 4 conductor open	6				m

Pin configuration

+U _s	positive bridge supply	green	
-U _s	negative bridge supply	black	shield: transparent
+U _D	positive bridge output	white	
-U _D	negative bridge output	red	
+U _s	positive sense	yellow	
-U _s	negative sense	white	