

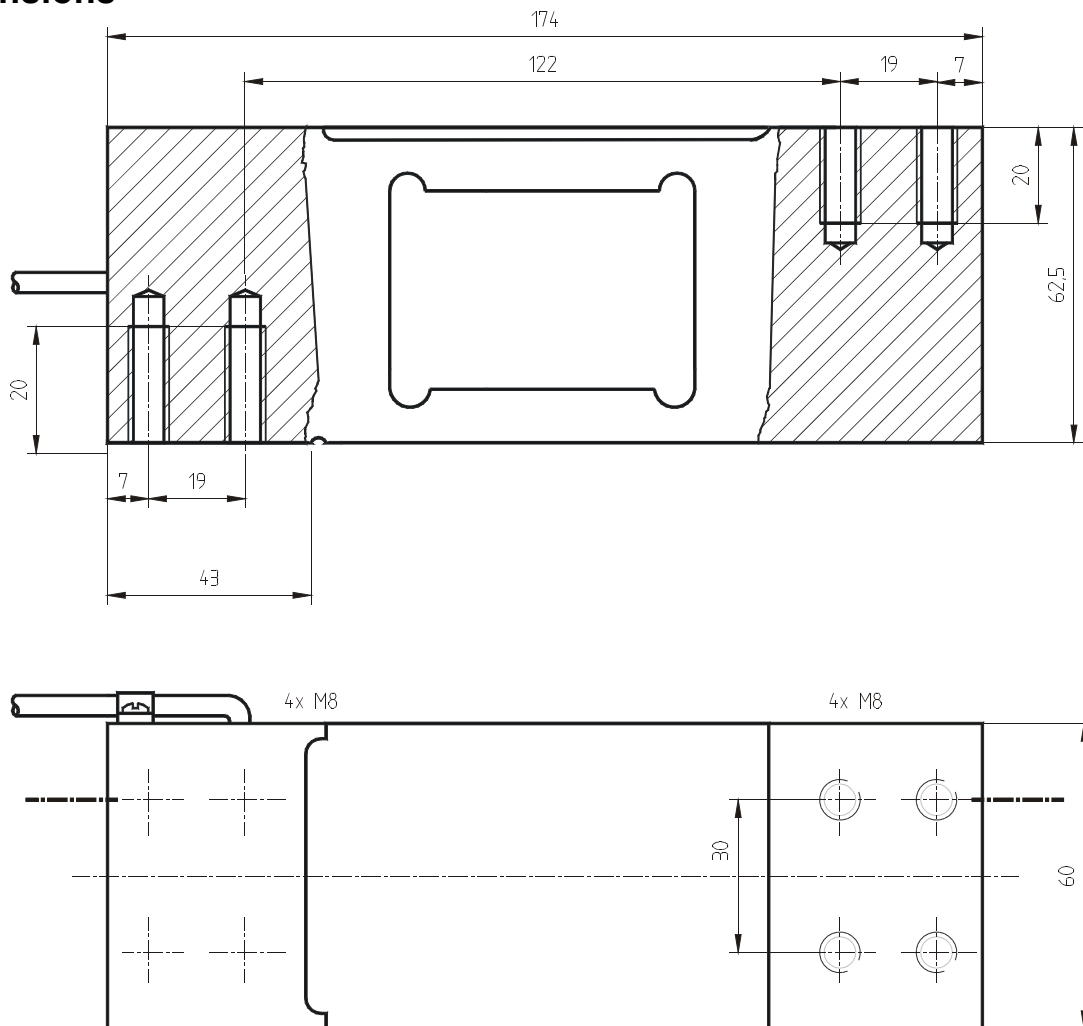
Load cell LCB174

Nominal force ranges (compression) 100 kg, 250 kg

The load cell LCB174 is used in automation and in process control. It is made for a platform size of max. 600mm x 600mm. The error caused by excentric load is less than 0.005% per 10mm excentricity.

Method of protection is IP 66.

Dimensions





Load cell LCB174

Nominal force ranges (compression) 100 kg, 250 kg

Technical Data

Load cell Construction	Compression
Material	Shearing Beam
Accuracy classes	Aluminum alloy
Nominal load (F_N)	E/F (0.03%)
	100 kg, 250 kg

Accuracy classes acc. to OIML R60	E	F	
Combined error	< ± 0.030	< ± 0.020	% S_N
Creep error (30 min)	< ± 0.05	< ± 0.025	% S_N
Temperature coeff. of the zero signal	< ± 0.1	< ± 0.06	% $F_N / 10^\circ\text{C}$
Temperature coeff. of the nominal output	< ± 0.03	< ± 0.014	% $S_N / 10^\circ\text{C}$

Operating load	150	% F_N
Ultimate overload	300	% F_N

Nominal temperature range	-10...+40	$^\circ\text{C}$
Operating temperature range	-30...+70	$^\circ\text{C}$
Storage temperature range	-30...+70	$^\circ\text{C}$

Nominal output (S_N)	$2.0 \pm 10\%$	mV/V
Zero balance	± 10	% F_N
Max. supply voltage	15	V
Input resistance	415 ± 15	Ohm
Output resistance	350 ± 3.5	Ohm
Insulation resistance	$> 2 \cdot 10^9$	Ohm
Connection 4 conductor	1.5	m

Pin configuration

+Us	positive bridge supply	green
-Us	negative bridge supply	black
+U _D	positive bridge output	red
-U _D	negative bridge output	white