

## Strain Sensor DA70



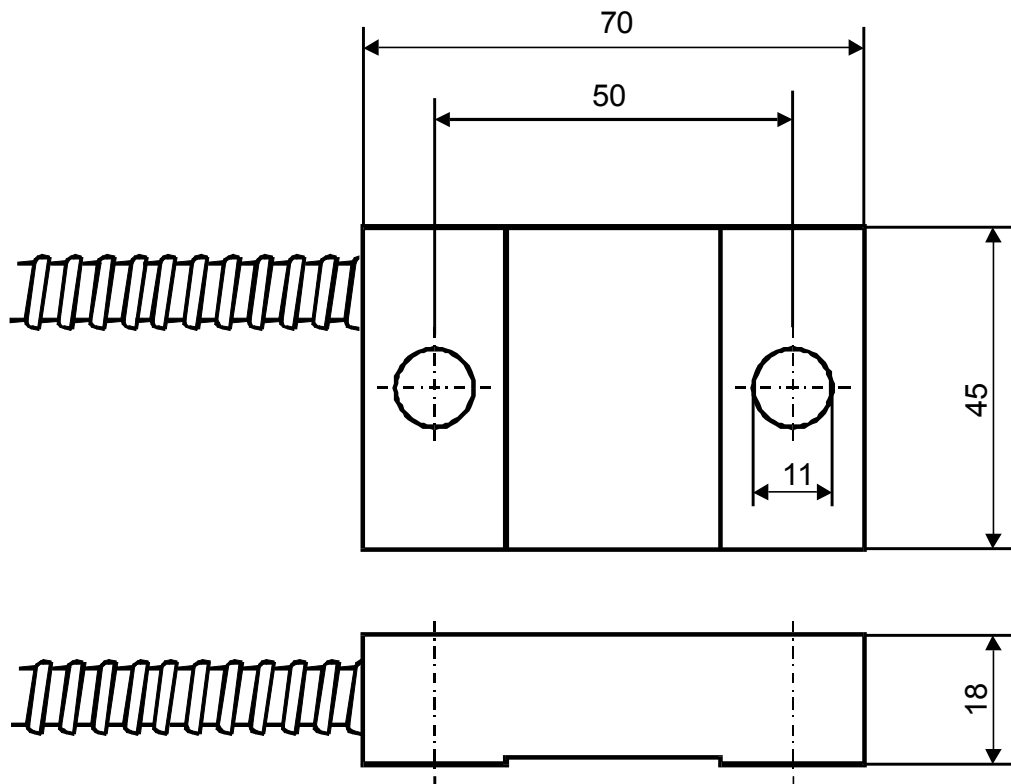
The strain sensor DA70 is suitable for strain and force measurement on machine elements under rough conditions. Installation is done quite simply by screwing the sensor with 2 screws M10 on an even material surface.

The connection cable is protected by a non-crushable spiral tube. The areas of application are, for example, force monitoring in agricultural and construction machinery, fill level measurement and strain data acquisition on machine elements. The temperature behavior and conversion factor depend on the geometrical and material pairing of sensor and component. The sensor is calibrated by subjecting the component to a known force. The DA 70 is also available with integrated evaluation electronics.

### Technical Data

Strain sensor	tension / compression	
Length × width × height	70 × 45 × 18	mm × mm × mm
Fastening	2 × Ø11, fastening interval 50	mm
Material	Ck45 chrome-plated	
Nominal measurement range	±1000	µm/m
Accuracy class	0.2	
Conversion factor	≈ 2	
Therm. coefficient of expansion	≈ 13 · 10 <sup>-6</sup>	1/K
Zero signal drift	according to material pairing	
Input resistance	1200 ±180 or 350 ±0.8	Ohm
Output resistance	1200 ±180 or 350 ±0.8	Ohm
Insulation resistance	> 5 · 10 <sup>9</sup>	Ohm
Supply voltage	2.5... 18	V
Connection, 4-conductor	5	m

## Dimensions



## Pin configuration

+Us	positive bridge supply	brown	
-Us	negative bridge supply	white	shield: transparent
+U <sub>D</sub>	positive bridge output	green	
-U <sub>D</sub>	negative bridge output	yellow	