



GSV-6BT_Tool_UWP

User Guide

Welcome to the User Manual of GSV-6BT_Tool_UWP_1.0.5.0.

GSV-6BT_Tool_UWP is a **Windows 10** tool for working with device GSV-6BT based on bluetooth Low Energy technology (BLE).

Install application

These instructions need to be done by the users of the application who wants to install the application on their device. In order to do that, they need to first configure the device and than install the application.

1. Configure the device

Open Settings -> Update & security -> For Developers

Select radio box "Developer mode"

Windows Settings

Find a setting



System

Display, notifications, power



Devices

Bluetooth, printers, mouse



Phone

Link your Android, iPhone



Network & Internet

WiFi, flight mode, VPN



Personalisation

Background, lock screen, colours



Apps

Uninstall, defaults, optional features



Accounts

Your accounts, email, sync, work, family



Time & Language

Speech, region, date



Gaming

Game bar, DVR, broadcasting, Game Mode



Ease of Access

Narrator, magnifier, high contrast



Privacy

Location, camera



Update & Security

Windows Update, recovery, backup



Search

Language, permissions, history

For developers

Use developer features

These settings are intended for development use only.

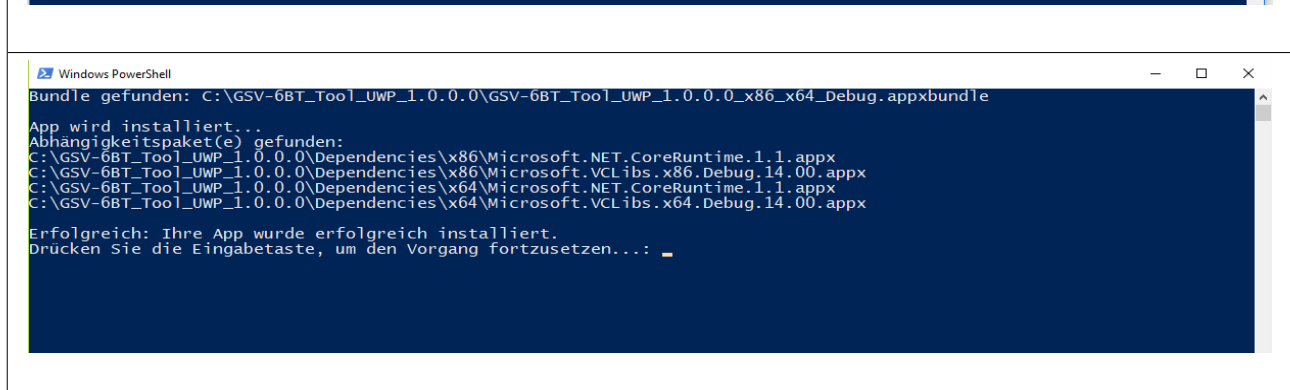
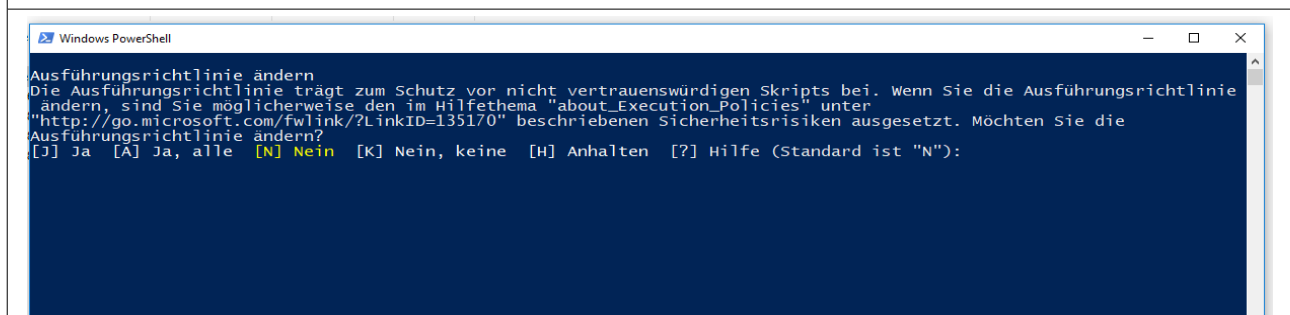
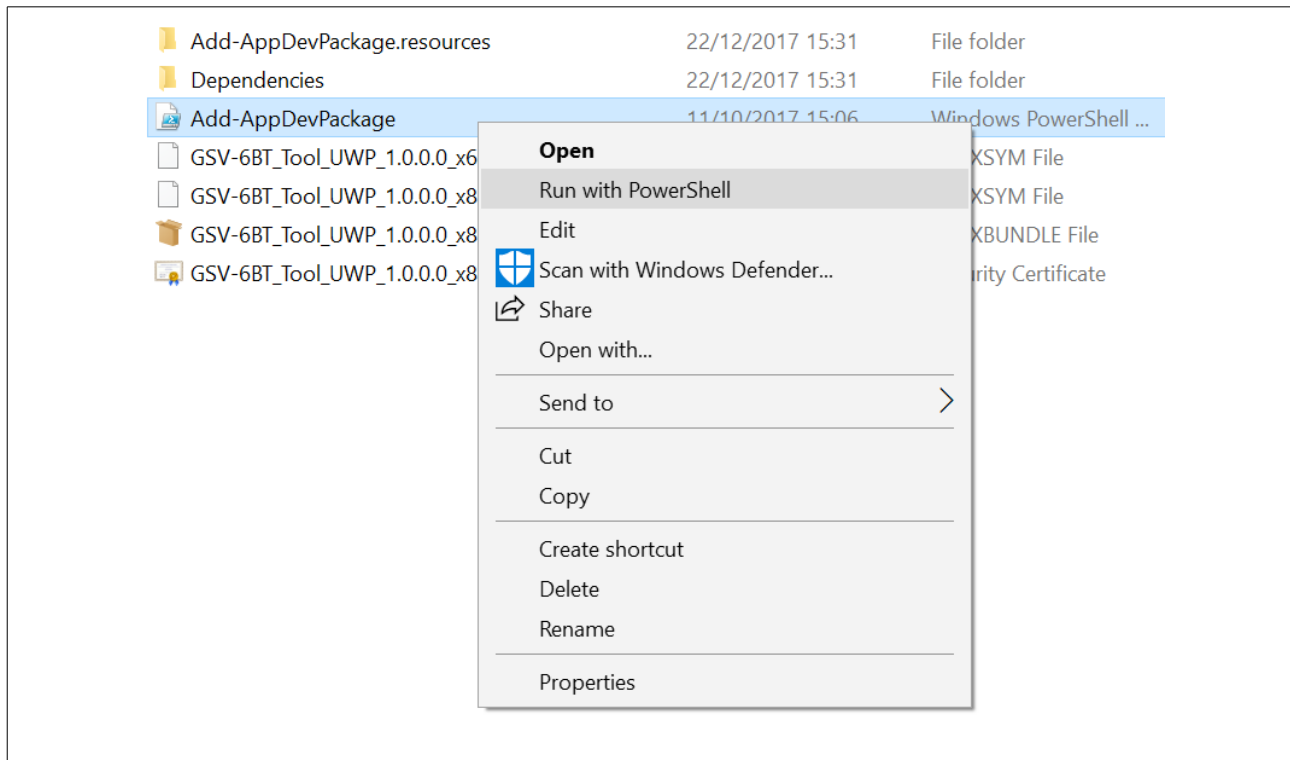
[Learn more](#)

- Windows Store apps
Only install apps from the Windows Store.
- Sideload apps
Install apps from other sources that you trust, such as your workplace.
- Developer mode**
Install any signed and trusted app and use advanced development features.

2. Run with PowerShell

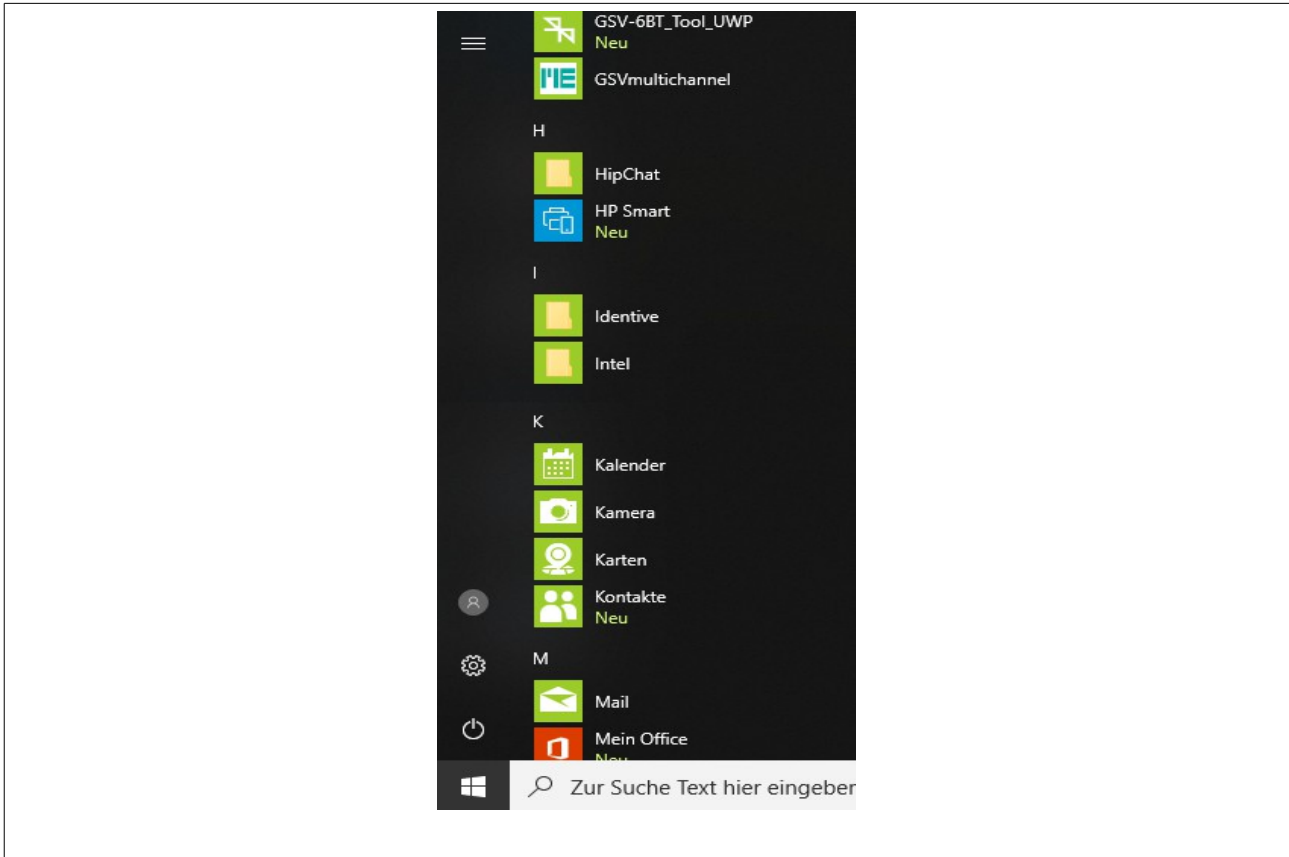
Add-AppxDevPackage is a PowerShell script designed to install App packages. To run this script from Explorer copy the App folder to your computer then right-click on its icon and choose "Run with PowerShell".

The same folder will also contain the App package (a .appx file), the signing certificate (a .cer file), and a "Dependencies" subfolder containing all the framework packages used by the App.





3. Use the application



GATT Specifications

Generic Attributes (GATT) services are collections of characteristics and relationships to other services that encapsulate the behavior of part of a device.

GATT Services

Services are collections of characteristics and relationships to other services that encapsulate the behavior of part of a device.

GATT Characteristics

Characteristics are defined attribute types that contain a single logical value. All Assigned Numbers values on this page are normative.

These are available at: <https://www.bluetooth.com/specifications/gatt>

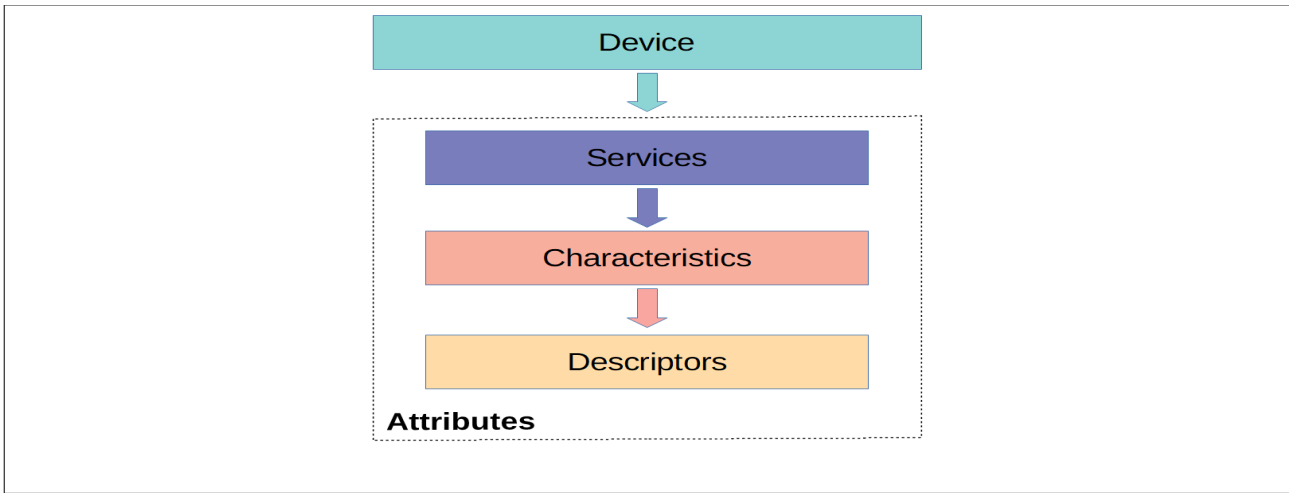


Figure: The Attribute structure

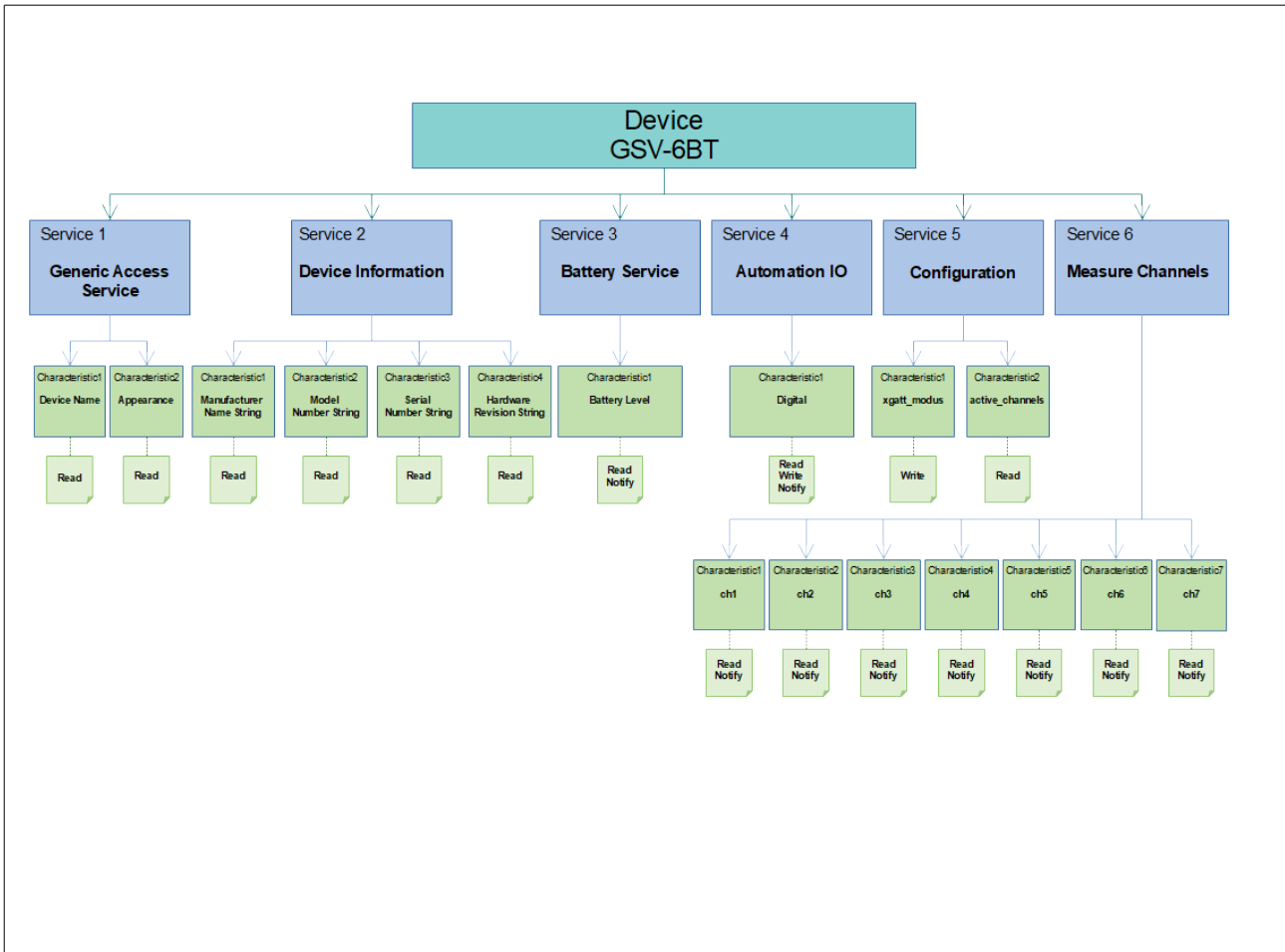
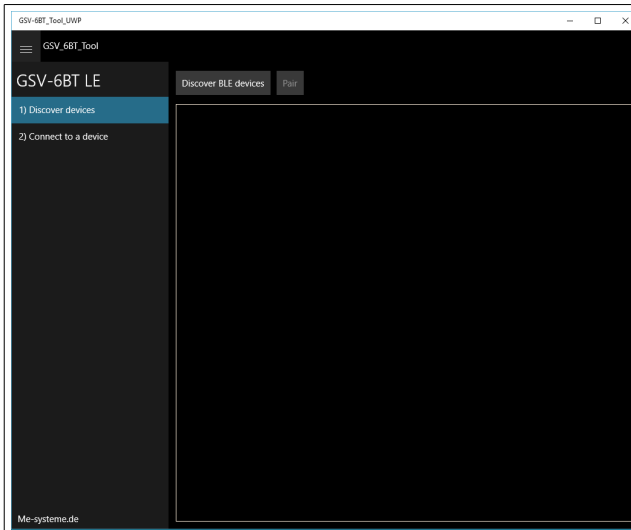


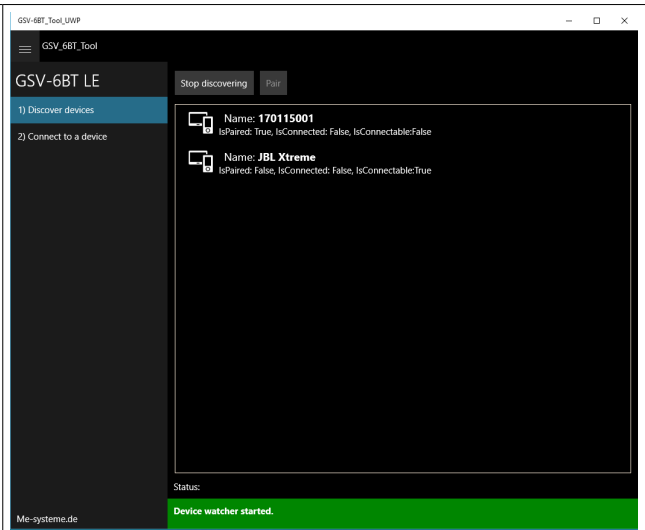
Figure: GSV-6BT GATT structure



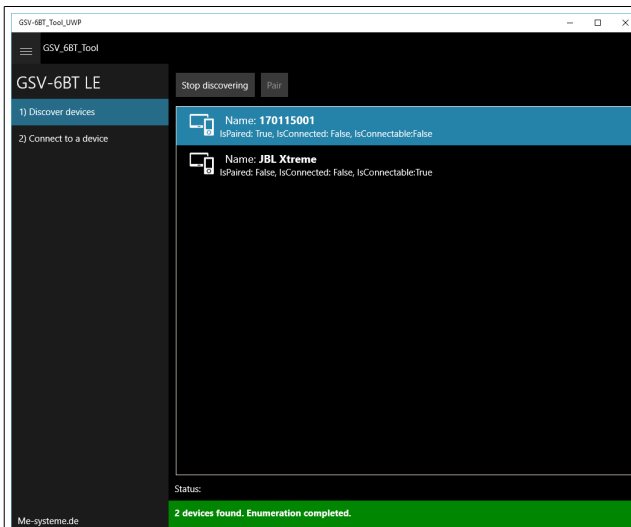
Working with GSV-6BT_Tool_UWP



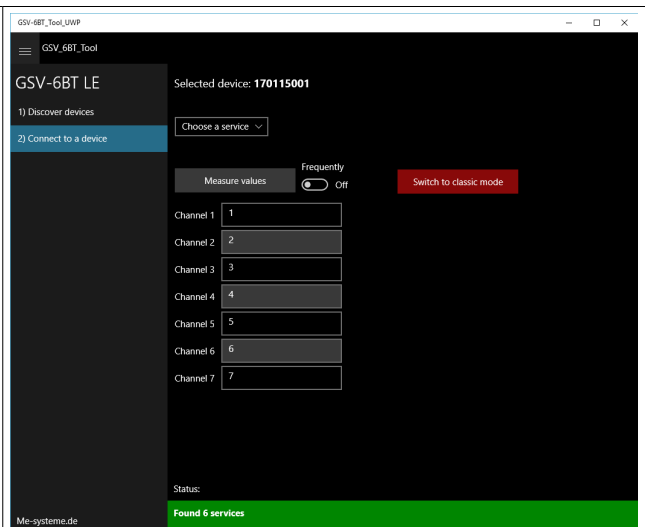
Start screen of the program



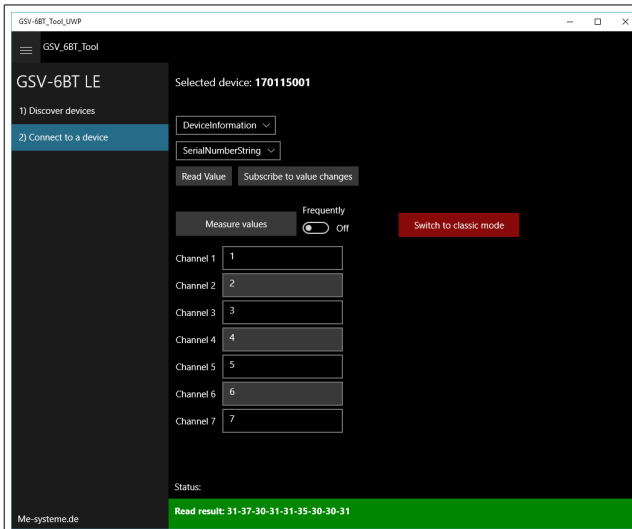
Use the [Discover BLE devices] button, to scanning nearby bluetooth LE devices



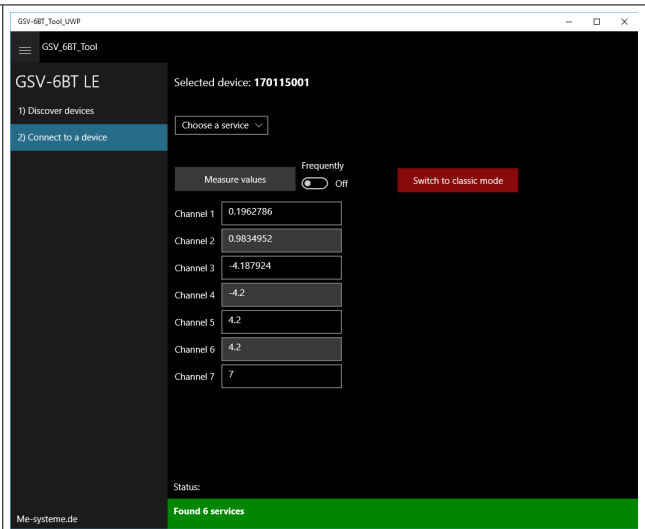
Select BLE device



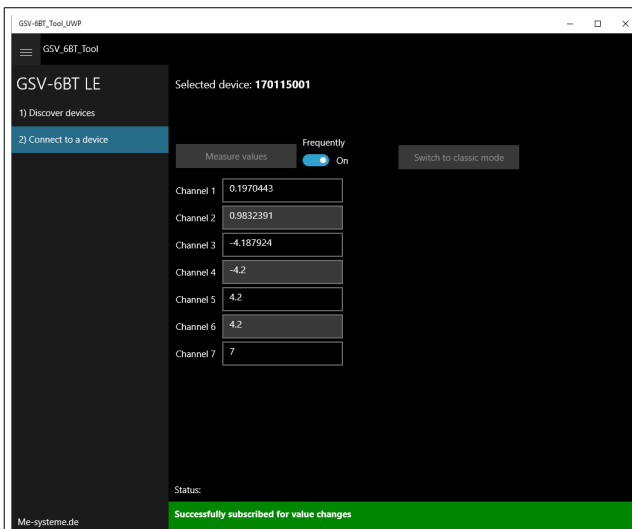
Use the [Connect] button, to connect the selected device



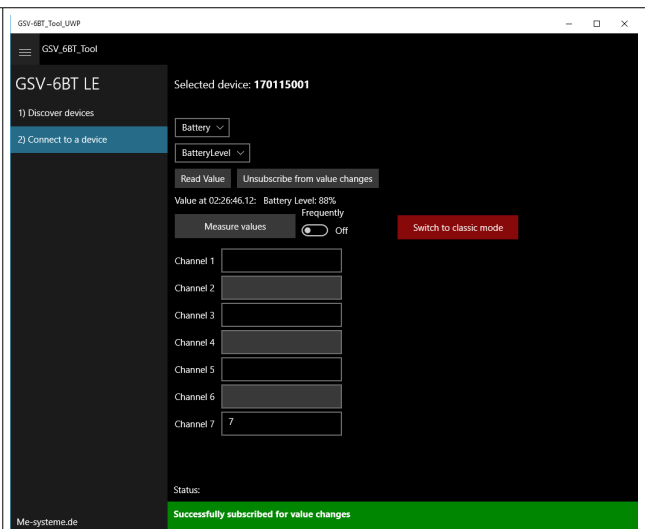
Choose which characteristics (from service) you want read ,write or notify



Use the [Measure values] button, to get one measure values from all channels



Use the [Frequently] Toggle switch, to get measure values from all channels



Subscribe for battery level



<p>The screenshot shows the GSV-6BT Tool interface. At the top, it says 'Selected device: 170115001'. Below that, there are two steps: '1) Discover devices' and '2) Connect to a device'. In the '2) Connect to a device' step, there is a 'Switch to classic mode' button. A dialog box titled 'Information' is open, asking 'Are you sure you want switch to classic mode?' with 'Yes' and 'No' buttons.</p>	<p>The screenshot shows the GSV-6BT Tool interface after the 'Switch to classic mode' button has been pressed. A dialog box titled 'Information' is open, displaying the message: 'Classic mode configured: switch power off/on to reboot in classic mode with SPP. GATT disabled! Please use software GSVmulti.' with a 'Schließen' button. The status bar at the bottom now says 'Successfully : wrote classic mode to device'.</p>
<p>Use the [Switch to classic mode] button, to configure device in SPP mode</p>	

Changelog

Version	Date	Comments
GSV-6BT_Tool_Documentation-v1.0_en.odt	22.12.17	Initial Version
ba-gsv6bt-UWP-App-v1.0_en.odt	25.02.18	Formatted for publication
ba-gsv6bt-UWP-App-v1.1_en.odt	07.03.18	GATT structure correction